

TailScape - Fully Integrates with AirScape®



TailScape fully integrates with **AirScape®** to deliver outstanding sealing at the rear area, resulting in **next level dust control, material spillage reductions and significant cost savings and resources.**

The TailScape proprietary and intelligent blade structure on the underside ensures a negative pressure environment within the conveying area. The negative pressure created prevents dust and other material spillage from escaping through the millimetre-thick gap, by up to 100%.

The unique TailScape design works without contact to the belt, this feature eliminates potential damage to the belt. Therefore, allowing it to operate freely and permanently without ongoing maintenance.



Features & Benefits:

- Simple installation.
- Minimises dust generation and the risk of dust explosions.
- No material spillage and high efficiency with coarse material applications.
- High efficiency with fine material applications (dust is contained in the material flow by air intake).
- No Belt cover or skirting wear due to a lack of contact and therefore friction.
- Reduces the load on the drive system (no belt friction).
- Maintenance and replacement cost reductions.
- Heat, flame-resistant, anti-static and FDA approved materials are available upon request.



Kinder Australia Pty Ltd

26 Canterbury Road, Braeside VIC 3195
PO Box 1026, Braeside VIC 3195

☎ +61 3 8587 9111
✉ +61 3 8587 9101

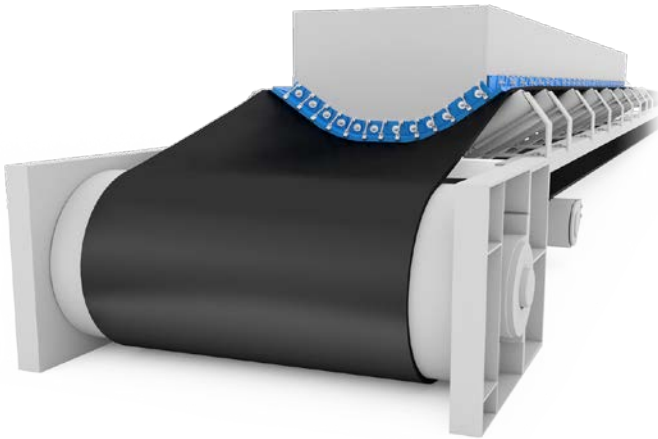
✉ conveyorsolutions@kinder.com.au

ABN: 28 006 489 238

<https://kinder.com.au>

Subject to © Kinder Australia Pty Ltd
Issue: 202108

TailScape - Fully Integrates with AirScape®



TAILSCAPE

TailScape is available in **small, medium and large size for all belt widths** and can also be precisely mounted to match all current AirScape® models.

When installed in conjunction with AirScape®, TailScape provides optimal sealing at the transfer point. This synergy delivers a highly effective barrier against dust generation, material spillage reduction and environmental protection.

INSTALLATION

At the rear area of the transfer point, a steel plate is used matching the contour of the belt trough. Ideally, the plate is mounted at a maximum distance of 10mm from the belt.

The TailScape is cut to size to match the chute width, bent into the trough profile and meet the AirScrapes mounted on the side. The TailScape is then fixed and adjusted to the belt by means of slotted holes and lifting elements allowing almost no gap or contact.



Kinder Australia Pty Ltd

26 Canterbury Road, Braeside VIC 3195
PO Box 1026, Braeside VIC 3195

☎ +61 3 8587 9111
☎ +61 3 8587 9101

✉ conveyorsolutions@kinder.com.au

ABN: 28 006 489 238

<https://kinder.com.au>

Subject to © Kinder Australia Pty Ltd
Issue: 202108