

Eraser HD™ Primary Belt Cleaning System



Heavy Duty Applications

Eraser HD™ Primary Belt Cleaner is designed for superior strength and durability with a 6 mm thick, 76 mm x 76 mm tube stock steel mainframe and corrosion-resistant, galvanized Schedule 80 pipe stub ends.

Key Benefits

- Designed for use on conveyors with crowned head pulleys or heavy vibration.
- Heavy duty 8" (203 mm) tall Raptor™ blades provide effective cleaning performance.
- Segmented blade lengths available in 154 mm, 305 mm and 457 mm which can be used in any combination for more effective cleaning.
- The Perma-Torque™ internal central tensioner is adjustable from 27 to 108 Nm resulting in uniform cleaning pressure to the conveyor belt.
- Compact mounting footprint only protrudes 127 mm from mounting structure.
- No rusted springs, hoses, cables, shocks or mud-packed components to deal with.
- Brightly coloured safety yellow end caps seal the Safe Torque™ ratchet from dust and water contamination.

Specifications

Belt Speeds up to 2.5m/s for G83 blades, for greater belt speeds contact Kinder Australia.

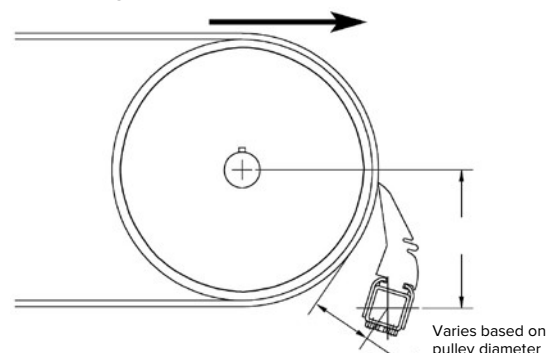
Minimum Pulley Diameter (PD): 406 mm

Mounting Distances:

- 127 mm	PD of 406 mm - 495 mm
- 114 mm	PD of 496 mm - 647 mm
- 102 mm	PD of 648 mm - 799 mm
- 89 mm	PD of 800 mm - 1003 mm
- 76 mm	PD of 1004 mm - 1155 mm
- 70 mm	PD of 1156 mm - 1220 mm

A wide variety of configurations as well as complete stainless steel systems are available

Mounting



<https://kinder.com.au>

Subject to © Kinder Australia Pty Ltd
Issue: 202102

Kinder Australia Pty Ltd

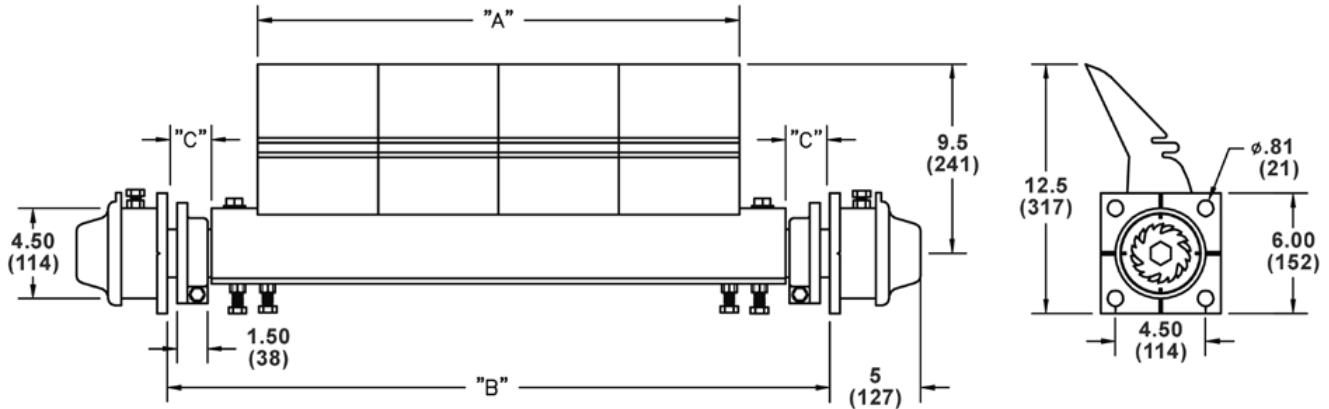
26 Canterbury Road, Braeside VIC 3195
PO Box 1026, Braeside VIC 3195

☎ +61 3 8587 9111
☎ +61 3 8587 9101

✉ conveyorsolutions@kinder.com.au
ABN: 28 006 489 238

Eraser HD™ Primary Belt Cleaning System

Sizing Information – Dimensions – mm

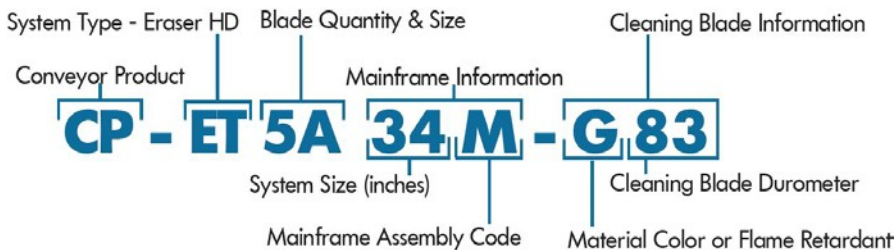


PART NUMBER	A mm	Min B mm	Max B mm	Min C mm	Max C mm	BLADE QTY
K-CLE-CP-ET-2A16M-G83	305	673	813	133	203	2
K-CLE-CP-ET3-A22M-G83	457	673	965	57	203	3
K-CLE-CP-ET-4A28M-G83	610	724	1118	6	203	4
K-CLE-CP-ET-5A34M-G83	762	876	1270	6	203	5
K-CLE-CP-ET-6A40D-G83	914	1028	1422	6	203	6
K-CLE-CP-ET-7A46D-G83	1067	1181	1575	6	203	7
K-CLE-CP-ET-8A52D-G83	1219	1333	1727	6	203	8
K-CLE-CP-ET-9A58D-G83	1372	1486	1880	6	203	9

Notes:
To get minimum B or C, the shaft collars must be removed.
For extended tensioner, add 14" (356 mm) to B max. and 7" (178 mm) to C max.
Standard sizes shown above. Other sizes are available from 16" (406 mm) to 100" (2540 mm).
Mainframes come standard 4" (102 mm) longer than blade length.

Notes:
A wide variety of configurations as well as complete stainless steel systems are available.

NOMENCLATURE



BLADES

- N62 Ether**
Normally used for extremely wet applications, sands & fines
- R80 Ether**
Good for wet applications with any pH level
- G83 Ester**
Our standard, high abrasion-resistant all-purpose cleaning blade
- U90**
Good for dry applications with any pH level
- B93 Ester**
Our high temperature cleaning blade, up to 250°F (121°C)
- FO83 Ester**
MSHA approved, Frontline® Flame-resistant cleaning blade
- RU83 Ester**
Flame retardant, anti-static cleaning blade



Kinder Australia Pty Ltd

26 Canterbury Road, Braeside VIC 3195
PO Box 1026, Braeside VIC 3195

☎ +61 3 8587 9111
✉ +61 3 8587 9101

✉ conveyorsolutions@kinder.com.au
ABN: 28 006 489 238

<https://kinder.com.au>

Subject to © Kinder Australia Pty Ltd
Issue: 202102

