

CASE STUDY: K-Commander® Control Series

Kinder Australia Product:	<u>K-Commander® Control Series</u>
Product Category:	Conveyor Belt Tracking
Location:	Victoria
Conveyed Materials:	Basalt Quarry Products
Production Capacity	100 tonnes per hour
Installation Date:	December 2016

CHALLENGE:

- Belt Tracking Issues
- Production down-time
- Material Spillage
- Increased maintenance time & replacement costs

Our customer specialises in quarrying high quality basalt products and is renowned as a leader in sourcing aggregates and other bulk materials to clients across Northwest Victoria.

Initial discussions with the quarry operator highlighted frustration and costly conveyor skirting replacement issues due to the regular belt tracking challenges experienced on site. During wet weather conditions, too much water on the conveyed rocks caused the conveyor belt to misalign.



The resulting impact of the conveyor belt rearing off centre caused significant material spillage and damage to the existing conveyor belt and polyurethane skirting. Production down-time and operational profitability was also compromised due to the additional monthly costs and maintenance time necessary to replace the damaged conveyor skirting.

“K-Commander® Control Series 100% fixed our ongoing belt tracking and maintenance problems immediately”

ABOVE
Image K-Commander®
Control Series Installation



<https://kinder.com.au>

Subject to © Kinder Australia Pty Ltd
Issue: 202102

Kinder Australia Pty Ltd

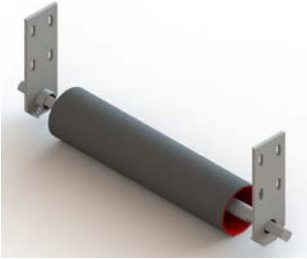
26 Canterbury Road, Braeside VIC 3195
PO Box 1026, Braeside VIC 3195

☎ +61 3 8587 9111
✉ +61 3 8587 9101

✉ conveyorsolutions@kinder.com.au
ABN: 28 006 489 238

CASE STUDY: K-Commander® Control Series

SOLUTION:



Product Links

K-Commander® Control Series

Familiar with the reliability and innovation of Kinder Australia's conveyor componentry product line up, the quarry maintenance team without question turned to Kinder Australia. At the onset Kinder's team of conveyor experts were responsive and addressed the site's main belt tracking issue, whilst simultaneously boosting productivity and wear life of existing conveyor skirting.

K-Commander® Control Series was elected and installed on site, with its unique engineered action of the central ball and socket link, enclosed in the rubber covered steel tube, ensured the belt will run true and centre. The added cost advantages of lagging replacement and reconditioning feature was also a drawcard for selecting the **K-Commander® Control Series**. The whole installation process was simple, efficient and cost-effective with minimal down-time during the implementation.

RESULTS:

- *Belt tracking runs true and centre*
- *Improved productivity and profitability*
- *Longer wear life of conveyor skirting*
- *Reduction in clean-up costs and production down-time*

Quarry Maintenance Team confirmed ***"K-Commander® Self Centring Idler 100% fixed our ongoing belt tracking and maintenance problems immediately"***. Correct belt alignment delivered from the **K-Commander® Control Series** successfully ticks all the boxes in terms of product performance and optimal operational productivity.

Morale, frustration and additional costs associated with replacing expensive damaged conveyor skirting has been averted. As well as the safety hazard risks of trips, spills and falls due to material spillage has also been eliminated.

So pleased at the effectiveness of **K-Commander® Control Series** our quarry customer has planned for the overhaul of Kinder's belt tracking solution for further areas of the quarries operations.



<https://kinder.com.au>

Subject to © Kinder Australia Pty Ltd
Issue: 202102

Kinder Australia Pty Ltd

26 Canterbury Road, Braeside VIC 3195
PO Box 1026, Braeside VIC 3195

☎ +61 3 8587 9111
📠 +61 3 8587 9101

✉ conveyorsolutions@kinder.com.au
ABN: 28 006 489 238